

UNIVERSAL 12/24 VOLT ICE FRONT PANEL AND BACK PANEL

INTRODUCTION

Hoffer has developed a universal ICE front panel and back panel that can be used with either 12 Volt or 24 Volt systems. These new universal panels replace two single-voltage (12 and 24) front and back panels.

ICE equipped with universal panels can be field programmed for any voltage, any language and any service without having to wait to get specific configuration from Hoffer. Hoffer customers can have global availability/accessibility with one basic hardware configuration regardless of the specific other features used in one locale or not. Universal panels allow customers to reduce spare parts inventory, and also shorten a delivery time from factory.

Universal front panels require ICE main board PCA188 revision C or later. Universal back panels can be used with any board revision.

PCA188 revision C has on board voltage selection switch that has to be set for the appropriate nominal supply voltage of 12V or 24V.

For operations with ICE PCA188 revision A or B refer to the compatibility information below.

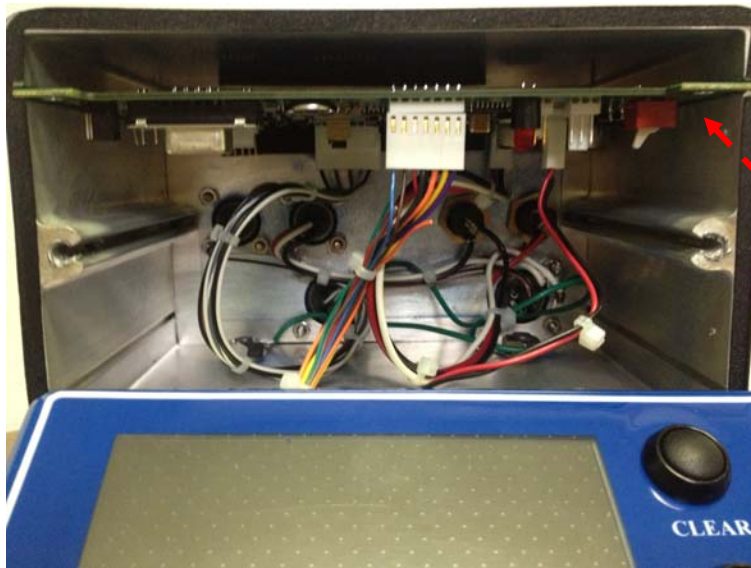
Front Panel Connection

For universal front panels, attach the 3-pin connector to J9 on PCA188 Rev C. SW1 should be set for the appropriate nominal supply voltage of 12V or 24V as indicated by the silkscreen markings next to the switch. SW1 is located in the lower left corner of PCA188 Rev C as illustrated below.

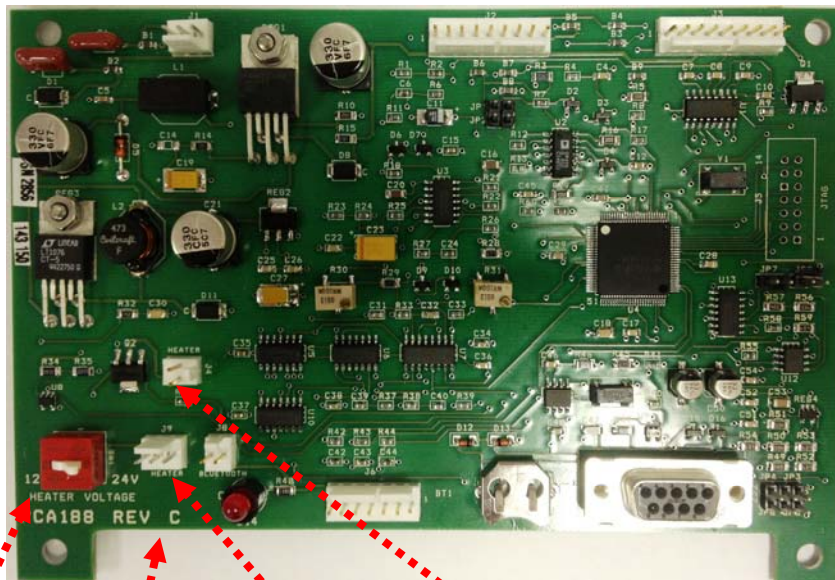
For non-universal front panels, attach the 2-pin connector to J4 on PCA188.

Identification of PCA188 Board Revision

The PCA188 revision level is silk-screened on the bottom in the front right corner. It can be read after removing the front panel.



PCA188 Revision
Marking Location



Voltage
selector
switch

PCA188
revision

3-pin connector
for universal
front panel

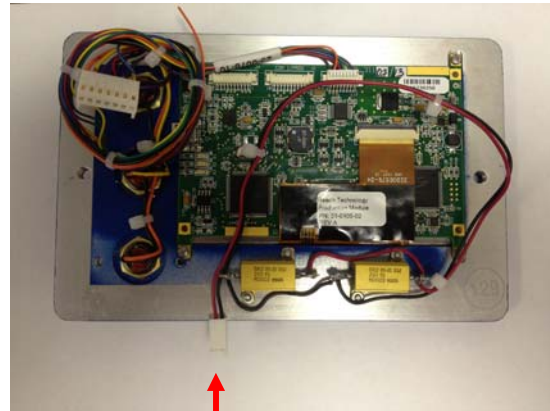
2-pin connector
for non-universal
front panel

Identification of Front Panel

Universal front panels are equipped with 3-pin heater connector. The non-universal front panels are equipped with 2-pin heater connector. Universal panels are labeled 12/24.



Universal Front Panel
3-pin connector



Non-Universal Front Panel
2-pin connector

Identification of Back Panel

Universal back panels have white/red wire inserted at pin 4 of J3 connector. Universal back panels are labeled 12/24.

Front Panel Compatibility

<i>PCA188 Board</i>	<i>Front Panel</i>	<i>Comments</i>
Revision C	Universal	Connect to 3-pin header on PCA188. Select proper voltage with the SW1 switch.
Revision C	Non-Universal 12V or 24V	Connect to 2-pin header on PCA188. Select proper voltage with the SW1 switch.
A or B	Universal	Do not attempt to connect 3-pin heater connector to 2-pin header on the PCA188. Damage may occur, fuse can be blown, and heater will not operate correctly.

Universal back panels and non-universal back panels can be used with any board revision.

Notes: The first ICE unit shipped with revision C Board was S/N 166544.
The first ICE unit shipped with Universal Front Panel was S/N 169748.